

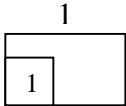
For
Examiner's
Use

[40 marks]
[40 markah]

Answer **all** questions.
Jawab semua soalan.

- 1 Convert 4.07 to a mixed number.
Tukarkan 4.07 kepada nombor bercampur.

[1mark]
[1 markah]



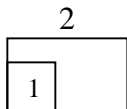
- 2 Diagram 1 shows a fraction card.
Rajah 1 menunjukkan sekeping kad pecahan.

[1mark]
[1 markah]

$$\frac{\square}{9} = \frac{2}{3}$$

Diagram 1
Rajah 1

What is the number must be written in the ?
Apakah nombor yang perlu ditulis dalam ?



- 3 Diagram 2 shows the time in one morning.
Rajah 2 menunjukkan waktu di suatu pagi.

[1mark]
[1 markah]

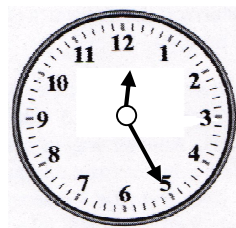


Diagram 2
Rajah 2

State the time show in 24-hour system.
Nyatakan waktu yang ditunjukkan dalam sistem 24 jam.

- 4 Diagram 3 shows five number cards.
Rajah 3 menunjukkan lima kad nombor.

[1mark]
[1 markah]



Diagram 3
Rajah 3

Using all the number cards given, form a number when rounded off to the nearest ten thousand becomes 100 000.

Menggunakan semua kad nombor yang diberi, bentukkan satu nombor apabila dibundarkan kepada puluh ribu yang hampir menjadi 100 000.

4

1	
---	--

- 5 Diagram 4 shows a number line.
Rajah 4 menunjukkan satu garis nombor.

[1mark]
[1 markah]



Diagram 4
Rajah 4

Find the value of M.
Cari nilai M.

5

1	
---	--

- 6 RM 4068 + RM 18 ÷ 6 =

[2 marks]
[2 markah]

6

2	
---	--

For
Examiner's
Use

7 $5\frac{4}{5} + 1\frac{7}{10} =$

[2 marks]
[2 markah]

7	
2	

8 $4 - 2\frac{1}{100} =$

[2 marks]
[2 markah]

Give the answer, in decimal.
Berikan jawapan, dalam perpuluhan.

8	
2	

9 Calculate 6 km 5 m – 275 m =
Hitungkan 6 km 5 m – 275 m =

[2 marks]
[2 markah]

9	
2	

10 $30\,706 - 958 - 58 =$

[2 marks]
[2 markah]

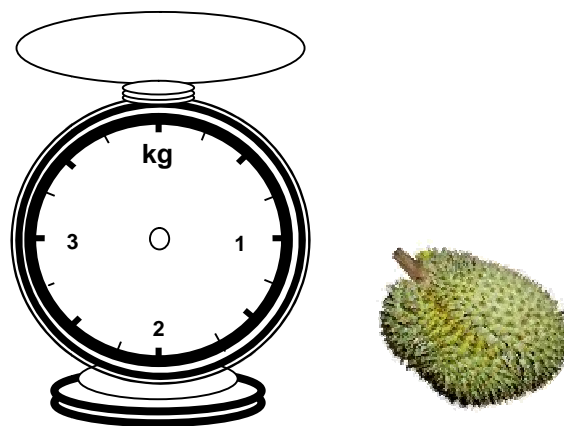
For
Examiner's
Use

10

2	
---	--

- 11 The mass of a durian is 1 kg 750 g.
Berat sebiji durian ialah 1 kg 750 g.

[2 marks]
[2 markah]



Draw the pointer on the weighing scale to show the mass of the durian.
Lukiskan jarum penimbang pada timbangan yang diberi untuk menunjukkan berat durian itu.

11

2	
---	--

For
Examiner's
Use

- 12 Diagram 5 shows the price of cloth in a supermarket.
Rajah 5 menunjukkan harga kain di sebuah pasaraya.

[2 marks]
[2 markah]



Diagram 5
Rajah 5

Nora buys 15 metres of similar cloth.
How much money does she need to pay?
Nora membeli 15 meter kain yang sama.
Berapakah jumlah wang yang perlu dia bayar?

12

2	
---	--

13 $3\frac{2}{3} \times 600 \text{ g} =$

[2 marks]
[2 markah]

Give the answer in kg.
Beri jawapan dalam kg.

13

2	
---	--

015/2

[Lihat sebelah]

SULIT

- 14 Table 1 shows the height of three pupils. [2 marks]
Jadual 1 menunjukkan ketinggian tiga orang murid. [2 markah]

Pupil <i>Murid</i>	Height <i>Tinggi</i>
Zainal	240 cm
Swee Lin	30 cm less than Zainal 30 cm kurang daripada Zainal
Suresh	2 m 10 cm

Table 1
Jadual 1

What is the average height, in cm, of each pupil?
Berapakah purata ketinggian, dalam cm, setiap murid?

14

2	
---	--

- 15 Diagram 6 shows the price and the discount of a wrist watch. [2 marks]
Rajah 6 menunjukkan harga dan diskaun sebuah jam tangan. [2 markah]



RM 150
18 % discount
18 % diskaun

Diagram 6
Rajah 6

What is the price of the wrist watch after discount?
Berapakah harga jam tangan selepas diskaun?

15

2	
---	--

- 16 Diagram 7 shows the volume of water in two containers.
Rajah 7 menunjukkan isipadu air dalam dua buah bekas.

[3 marks]
[3 markah]

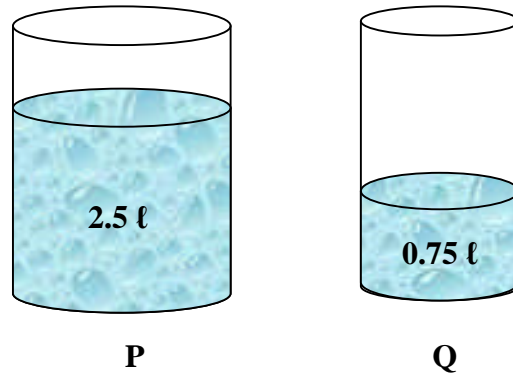


Diagram 7
Rajah 7

$\frac{4}{5}$ of the water from container P is poured into container Q.

What is the total volume of water, in ml, in container Q?

$\frac{4}{5}$ daripada air dari bekas P dituang ke dalam bekas Q.

Berapakah jumlah isipadu air, dalam ml, dalam bekas Q?

16

3

For
Examiner`s
Use

- 17 Diagram 8 shows a rectangle RSTU .
Rajah 8 menunjukkan sebuah segi empat tepat RSTU.

[3 marks]
[3 markah]

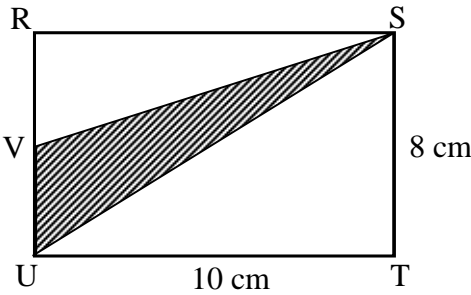


Diagram 8
Rajah 8

The length $RV = VU$.
Calculate the area , in cm^2 , of the shaded region.
Panjang $RV = VU$.
Hitungkan luas , dalam cm^2 , kawasan berlorek .

17

3

- 18 Table 2 shows the price of two types of drinking water.
Jadual 2 menunjukkan harga bagi dua jenis air minuman.

[3 marks]
[3 markah]

Juice Jus	Price Harga
A tin of orange Setin oren	75 sen
A tin of mango Setin mangga	4 times the price of the orange juice. 4 kali harga jus oren

Table 2
Jadual 2

What is the total price of a tin of orange juice and 6 tins of mango juice?
Berapakah jumlah harga bagi setin jus oren dan 6 tin jus mangga?

18

3

For
Examiner's
Use

19

Diagram 9 shows a square RSUV.

Rajah 9 menunjukkan sebuah segiempat sama RSUV.

[3 marks]

[3 markah]

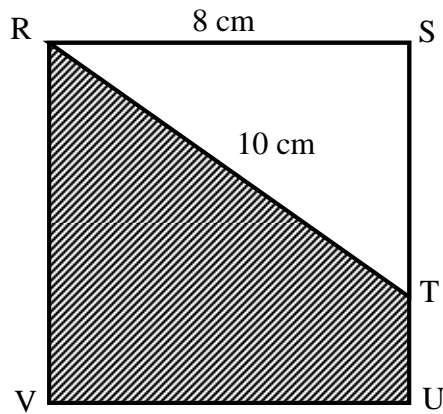


Diagram 9

Rajah 9

The length of ST = 3 times TU.

Find the perimeter, in cm, of the shaded region.

Panjang ST = 3 kali TU.

Hitungkan perimeter, dalam cm, kawasan berlorek.

19

3	
---	--

015/2

[Lihat sebelah]
SULIT

- 20 Diagram 10 shows the closing time of a bookshop .
Rajah 10 menunjukkan waktu tutup perniagaan sebuah kedai buku .

[3 marks]
[3 markah]

For
Examiner's
Use

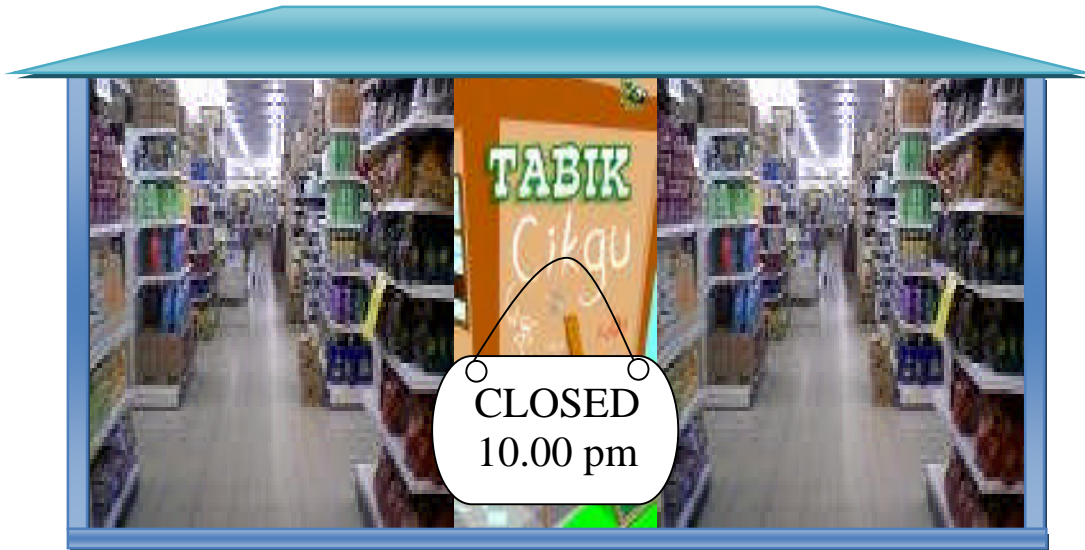


Diagram10
Rajah 10

The duration of the business hour of the bookshop is 11- hours.
State the starting time of the bookshop.
Tempoh masa urusaniaga kedai buku ialah 11- jam.
Nyatakan waktu mula urusaniaga kedai buku itu.

END OF QUESTION PAPER

KERTAS SOALAN TAMAT